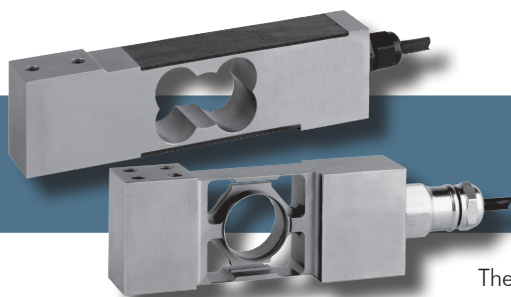


SINGLE POINT SERIES



HI SP1 and HI SP6 Single Point Load Sensors

The Hardy Process Solutions HI SP Series of single point load cells are designed for the OEM, conveyor and bench scale markets which require a low sensitivity to off center loads. They are built to perform in harsh environments found in the food, chemical and allied industries. The sensors are 17-4 PH stainless steel, with C2[®] calibration capabilities and come with three meters (9-10 ft) of cable.

The HI SP1 is available in capacities from 7.5kg to 200kg (16.5 to 440lbs), are environmentally protected with a plastic covering to IP67 (IP65 for 7.5 and 10kg) and have an integral mounting spacer.

The HI SP6 is available in capacities from 10kg to 200kg (22 to 440lbs), are completely hermetic sealed to IP68 and have an integral mounting spacer.

Both the HI SP1 and the HI SP6 have a maximum platform size of 600mm x 600mm (23.62 inches x 23.62 inches).

SPECIFICATIONS	HI SP1	HI SP6
Rated Output (ES)	2±0.10mV/V	2±0.10mV/V
Non-Linearity	< ±0.0166 % R.O.	< ±0.0166 % R.O.
Hysteresis	< ±0.0166 % R.O.	< ±0.0166 % R.O.
Zero Balance	< ±5.0 % R.O.	< ±5.0 % R.O.
Combined Error	< ±0.02 % R.O.	< ±0.02 % R.O.
Creep @ 30 Min.	< ±0.0166 % R.O.	< ±0.0166 % R.O.
Temp Effect Output	< ±0.0140 % R.O./C	< ±0.0112 % R.O./C
Temp Effect Sensitivity	< ±0.010 % R.O./C	< ±0.010 % R.O./C
Input Resistance	390 ± 20 ohm	1100 ± 50 ohm
Output Resistance	330 ± 25 ohm	960 ± 50 ohm
Insulation Resistance	≥5000 Mohm	≥5000 Mohm
Excitation	5 - 15 vdc	5 - 15 vdc
Safe Load Limit	200 % Emax	200 % Emax
Ultimate Load	300 % Emax	300 % Emax
Safe Side Load	100 % Emax	100 % Emax
Hazardous	FM IS, Class1, Div 1	FM IS, Class1, Div 1
Warranty	Two years	Two years

ORDERING INFORMATION

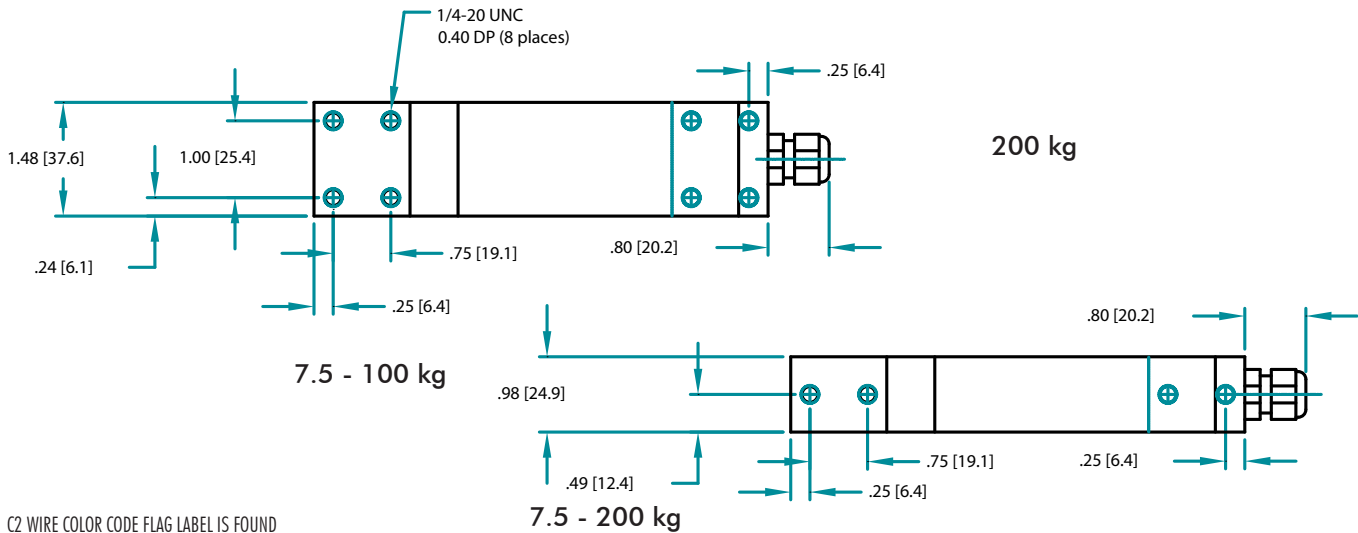
No mounting hardware. Shipping Wt. approx. 4 lbs. for HI SP6, 3 lbs. HI SP1.

Capacity		Model#
lbs*	kg	Load Sensor
22	10	HI SP6-10
44	20	HI SP6-20
110	50	HI SP6-50
220	100	HI SP6-100
440	200	HI SP6-200

Capacity		Model#
lbs*	kg	Load Sensor
16.5	7.5	HI SP1-7.5
22	10	HI SP1-10
33	15	HI SP1-15
66	30	HI SP1-30
110	50	HI SP1-50
165	75	HI SP1-75
220	100	HI SP1-100
440	200	HI SP1-200

* Lbs estimated from kg conversion

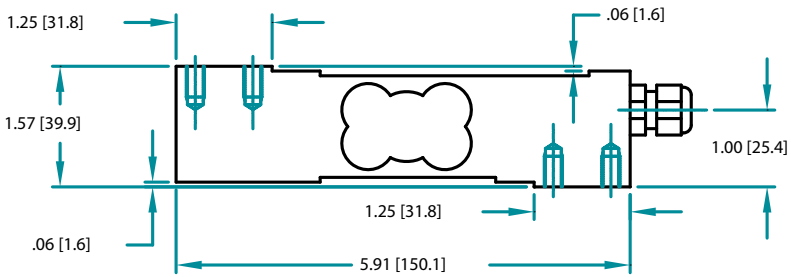
HI SP1 Single Point Outline



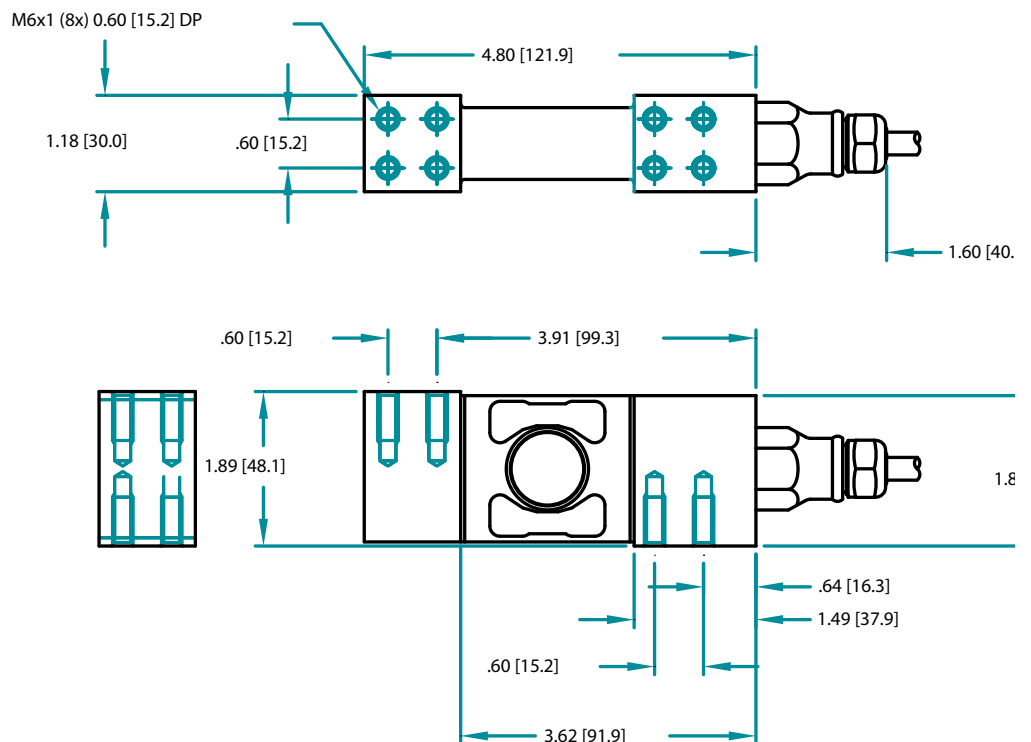
C2 WIRE COLOR CODE FLAG LABEL IS FOUND
APPROX. 10 IN. FROM END OF SENSOR'S CABLE

	HISP1	HISP6
EXCITATION +	GREEN	RED
EXCITATION -	BLACK	BLACK
SIGNAL +	WHITE	GREEN
SIGNAL -	RED	WHITE
C2+	GRAY	GRAY
C2-	VIOLET	VIOLET
SHIELD	YELLOW	YELLOW

WARNING: NEVER cut load sensor cable
CABLE LENGTH 9-10 FEET



HI SP6 Single Point Outline



800.821.5831

+1 858.278.2900