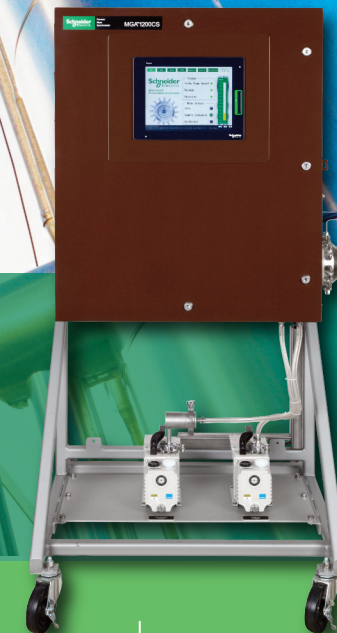


Designed for Engineering

INNOVATION

Schneider Electric Process Analyzers



[schneider-electric.processautomation](https://schneider-electric.com/processautomation)

Life Is On

Schneider
Electric

Life Is On | **Schneider**
 Electric

Schneider Electric Process Analyzers

ANALECT® FTIR

Using a broad spectral region from the near-infrared to the mid-infrared, the ANALECT series of FTIR/FT-NIR analyzers measure physical & chemical properties of liquids, solids & gases. The process proven ANALECT Transept™ Interferometer provides superior performance for complex refinery applications such as fuels blending and component streams applications for polymers, petrochemicals, chemicals, pharmaceuticals in addition to general manufacturing.

Customers Include ADNOC, Agip, Dow Chemical, Dow Corning, DuPont, ExxonMobil, Gazpromneft, Hemlock Semiconductor, OMV, Sadara, Saudi Aramco and Valero.



SpectraSuite™ takes you from lab to on-line, providing real-time process analysis, model development, validation routines and environmental reporting all in one reliable and stable suite of software.

Hydrocarbon SmartSystem®

On-line, real-time FTIR monitoring of refinery and petrochemical process streams in hazardous areas.



RefinIR™

Fully integrated laboratory autosampler and FTIR instrument designed to analyze heavy and light hydrocarbons including crude oil and gasoline.



ANALECT EVM™

Provides round-the-clock multi-point continuous air monitoring for a variety of applications.



PCM 1000 & 5000™

FTIR & FT-NIR process analyzers for gases, liquids & solids designed in custom configurations.



Diamond 20

System designed for operation in rugged at-line environments as well as the laboratory bench.



Life Is On

Schneider
Electric

Schneider Electric Process Analyzers

PIONIR® Dispersive Near Infrared

The PIONIR series NIR analyzers are designed for operation in process development as well as rugged, on-line environments utilizing patented and licensed BPAmoco technology. PIONIR systems provide real-time, multi-point analysis of refinery process streams such as gasoline and diesel fuel. Applications include RON, MON, distillation points, aromatics, olefins and cetane number.

Customers include ADNOC, BP, CITGO, CPCL, Gazpromneft, HPCL, IOCL, Orpic, Phillips 66, Rompetrol, Statoil, PBF Energy and Tesoro.



SpectraSuite™ takes you from lab to on-line, providing real-time process analysis, model development, validation routines and environmental reporting all in one reliable and stable suite of software.

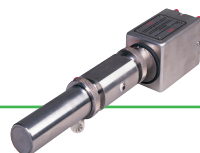
PIONIR® 1024X™
Multi-channel on-line analyzer designed for operation in hazardous areas.



PIONIR® MVP+™
Support for process development, the MVP+ utilizes the same optical bench as the 1024. Also available in a process rackmount configuration.



PIONIR® Probe
Unique dual-channel design provides a background with every sample run. It allows for industry leading stability.



Validation Skid
Compliant to ASTM D6122: Standard practices for validation of performance of on-line analyzers.



Schneider Electric Process Analyzers

FXI® Process Gas Chromatography

The FXI process gas chromatograph continuously analyzes and reports individual component concentrations of gas or liquid process streams. Typical applications include BTU, hydrocarbon dew point, H₂S and total sulfur analysis in natural gas, speciation of hydrocarbon isomers, analysis of aromatic compounds, ambient air, analysis of hydrocarbons, high purity analysis at ppb levels and wastewater analysis.

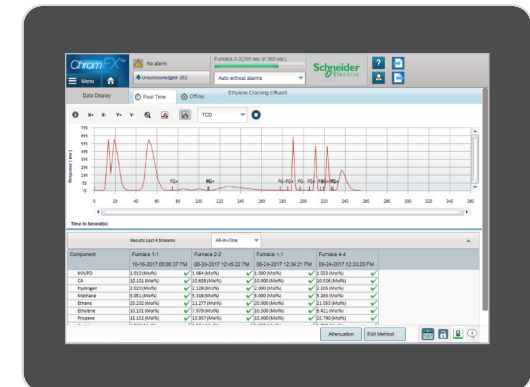
Customers include BASF, Brunei LNG, Formosa Plastics, Goodyear, Huntsman, J&J Ethicon, Malaysia LNG, Petrovietnam, Sabic and Saudi Aramco.

FXI® Series 7™

Next generation process gas chromatograph developed by AIT from a heritage of highly reliable process GCs. The FXI Series 7 blends an all new state-of-the-art HMI software and modular electronics platform with field-proven, robust chromatography architecture. New enhancements to the platform feature ChromFX™ software, parallel chromatography, multiple-oven and (EPR) Electronic Pressure Regulation capabilities.



ChromFX™ software platform simplifies user setup and operational functions through an intuitive easy to navigate user menu-selectable interface.



FXI Series 7®
Standard Oven



FXI Series 7®
Dual Detector Oven



FXI Series 7®
Multi-Detector Dual Oven



Schneider Electric Process Analyzers

MGA™ Process Mass Spectrometry

The MGA series of Multiple Gas Analyzers utilize proprietary magnetic sector technology to provide rapid, accurate and stable real-time monitoring of multi-component gas streams. Applications include fermentation, cell culture, olefins, poly olefins ethylene oxide, ammonia, fuel cell analysis, blast furnacetop gas and steel converters.

Customers include AbbVie, ArcelorMittal Steel, BASF, BOC Gases, Delphi Automotive, DuPont, Eli Lilly, GE, Merck, NASA, Nippon Sumitomo Steel, Pfizer, Scientific Design, Solazyme &U.S. Steel.

MGA 1200CS™

Fixed magnetic sector analyzer providing rapid, accurate, stable, real-time analysis of up to 16 gas components in less than 1 second.



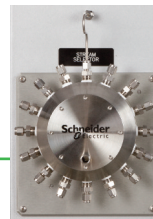
MGA 1200CS™

Designed for IIoT, the control architecture is based on the Modicon M580 ePAC programed with EcoStruxure Control Expert software.

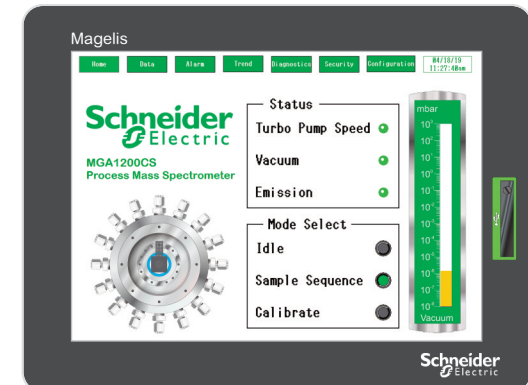


Phoenix™ Multi-Stream Sampler

Provides fast-purging stream selection for 16, 32, 50 or 100 streams with new stream analysis data provide every 2-3 seconds.



MGA 1200CS software is designed to provide cybersecure process monitoring & accurate reporting of multi-component gas streams via IIoT.



Schneider Electric Process Analyzers

RPM® Laser Raman Systems

The RPM View is a Patented Raman Photometer designed for real-time concentration measurement and analysis of multiple analytes in either liquid or gas phase process streams. The RPM View analyzer is compact and can be configured to perform continuous chemical composition analysis of up to eight components. The RPM View directly couples onto a process resulting in high sensitivity measurements through a process view interface cell. The RPM 785 is a multi-channel ccd-based analyzer designed for multiplexing fiber-optic probes and cells.



SpectraSuite™ takes you from lab to on-line, providing real-time process analysis, model development, validation routines and environmental reporting all in one reliable and stable suite of software.

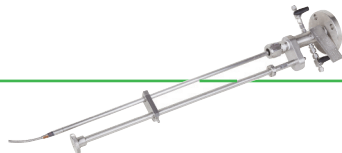
RPM® 785™

Multi-channel CCD-based Raman analyzer designed for real-time process development monitoring.



RPM® 785™ Probe

Custom Raman analyzer in-situ and extractive probes are available.



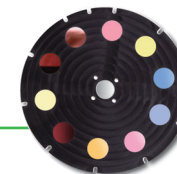
RPM® View™

Raman Photometer delivers real-time analysis of liquid or gas phase process streams.



RPM® Photometer Wheel

Filter wheel allows analysis of up to eight process components.



RPM® Interface Cell

High sensitivity Raman cell can be configured for liquid or gas phase applications.



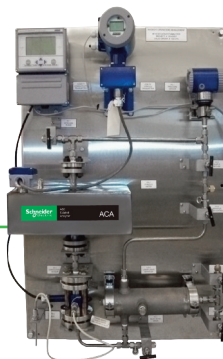
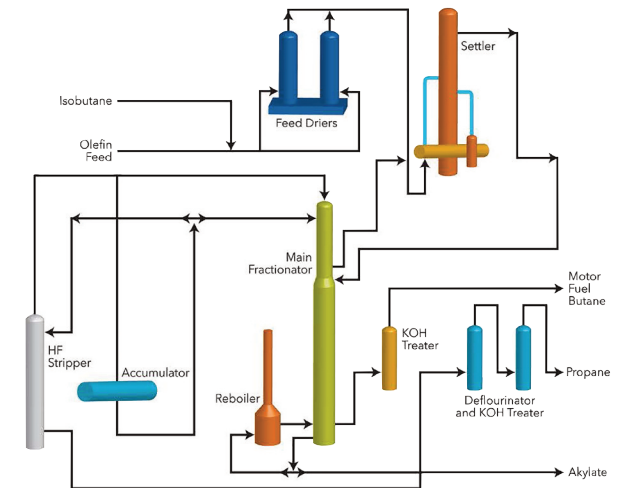
Schneider Electric Process Analyzers

ACA.HF™ Acid Catalyst Analyzer

The ACA.HF Advanced Measurement Solution from Schneider Electric is a non-spectroscopic acid catalyst measurement solution that provides online measurement of all components in alkylation catalyst: hydrofluoric acid (HF), ASO, and water. It employs highly reliable core components, which are long proven in industrial HF service and whose mean time between failures (MTBF) is estimated by established industry methods to exceed 29 years.

With measurement accuracy that exceeds that required for precise process control, the ACA.HF offers additional benefits:

- Lower overall cost of ownership
- Installed cost that is approximately half of the spectroscopic-based HF measurement
- Reduced complexity in the installation and sample preparation for improved safety and reliability
- Out of the box calibration eliminating long sample collection and modeling duration



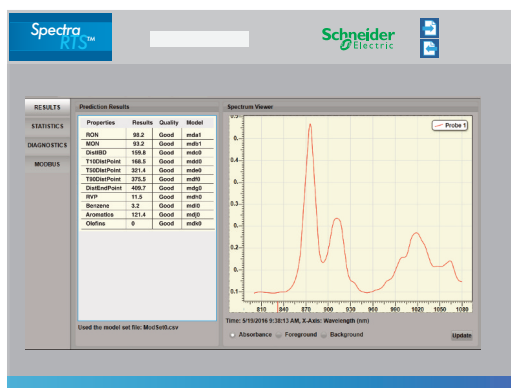
RPM® 785™ Probe
Custom Raman analyzer
in-situ and extractive
probes are available.

Schneider Electric Process Analyzers

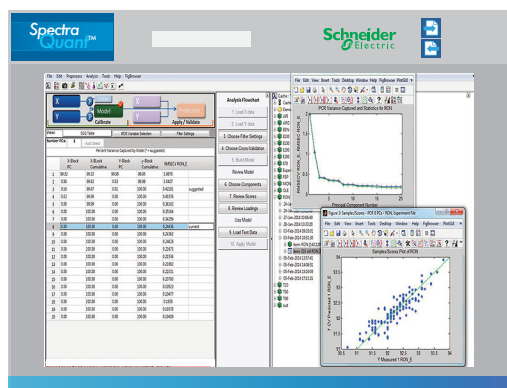
SpectraSuite™ Software

Schneider Electric's Powerful Software Package

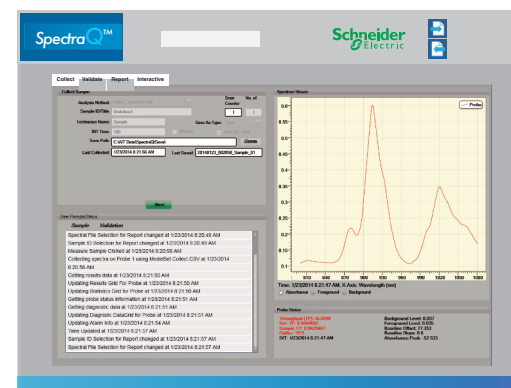
SpectraSuite takes you from routine laboratory use to on-line, providing real-time process analysis, model development, validation routines and advanced process control interface; all in one reliable and stable suite of software. It is designed to be deployed across the ANALECT®, PIONIR® and RPM® products.



SpectraRTS™ is leading edge Windows® based software utilized with analyzers for process monitoring, analysis and control. It provides sample system control and DCS communications.



SpectraQuant™ is advanced Windows® based chemometric software utilizing spectrascopic models to deliver predictions.



SpectraQ™ enables the effective use of Schneider Electric's instruments and sampling accessories for routine laboratory analysis and instrument validation.

SpectraEVM™ gives you an environmental reporting package allowing continuous reporting of up to 99 streams for use in a CEMS or other ambient air monitoring applications.

SpectraStudio™ provides a Windows® based data collection and analysis program designed to provide a high degree of flexibility to users operating in lab environments.

Life Is On





Schneider Electric
Process Analyzers
2121 Aviation Drive
Upland CA 91786
USA

© 2019 Schneider Electric. All Rights Reserved. Life Is On Schneider Electric is a trademark and the property of Schneider Electric SE, its subsidiaries and affiliated companies. ANALECT, PIONIR, RPM, FXI and Hydrocarbon SmartSystem are registered trademarks of Schneider Electric SE. MGA 1200CS, Phoenix, SpectraRTS, SpectraQuant, SpectraQ, ChromFX, Prime, Cypress, RefinIR, RemoteRX, Diamond 20 and Transept are trademarks of Schneider Electric SE. • 998-XXXXXXX_GMA-GB
For any Proposition 65 information, please see our website.